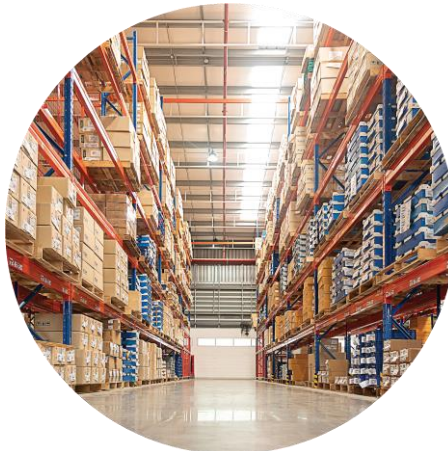


DAILY REPORT

28.04.2021.



Reporting time: 08.00 h

SERBIA

HORGOŠ:

- *Entry to Serbia: waiting time 5-6 hours, 40 trucks in the waiting line.*
- *Exit from Serbia: waiting time 1-2 hours, 500 m long waiting line.*

KELEBIA

- *Entry to Serbia: waiting time 1 hour, 10 trucks in the waiting line.*
- *Exit from Serbia: waiting time 1-2 hours, 500 m long waiting line.*

TOVARNIK-ŠID

- *Entry to Serbia: waiting time 1 hour, 10 trucks in the waiting line.*
- *Exit from Serbia: waiting time 30 minutes, 5 trucks in the waiting line.*

BATROVCI

- *Entry to Serbia: waiting time 1 hour, 15 trucks in the waiting line.*
- *Exit from Serbia: waiting time 3 hours, 35 trucks in the waiting line.*

PREŠEVO BORDER CROSSING

- *Entry to Serbia: waiting time 4-5 hours, 40-50 trucks in the waiting line*
- *Exit from Serbia: waiting time 1 hour, 6 trucks in the waiting line.*

GRADINA

- *Entry to Serbia: waiting time 1 hour, 10 trucks in the waiting line.*
- *Exit from Serbia: waiting time 40 minutes, 5 trucks in the waiting line.*

VATIN

- *Entry to Serbia: no delays.*
- *Exit from Serbia: no delays.*



BOSNIA AND HERZEGOVINA

Gradiška (BIH-HR):

- 70 freight vehicles on BiH exit and waiting time 3 hours.
- Waiting time on BiH entry 1 hour.
- Jams at the customs terminal Gradiška.

Rača (BIH-SRB):

- 10 freight vehicles waiting on BiH exit.
- No freight vehicles waiting on BiH entry.
- 15 vehicles at the terminal waiting for veterinary or phytosanitary checks.



ALBANIA

- **H. Hotit (MNE):** waiting time on entry 1 hour (9 vehicles), waiting time on exit 1 hour (4 vehicles).
- **Durres (ITA):** waiting time on entry 3 hours (32 vehicles), 87 vehicles waiting on exit.
- **Morine (XK):** waiting time on entry 1 hour (5 vehicles), waiting time on exit 1 hour (5 vehicles).
- **Q.Thane (MKD):** waiting time on entry 2 hours (15 vehicles), and waiting time on exit 1 hour (5 vehicles).
- **Kapshtice (GR):** waiting time on entry 1 hour (6 vehicles) and no delays on exit.
- **Kakavia (GR):** no delays on entry and no delays on exit.

Ban on leaving homes from 8 p.m. to 6 a.m., all restaurants and bars are open.



- **Bregana border crossing:** waiting time on entry 2 hours, and waiting time on exit 3 hours.
- **Macelj border crossing:** waiting time on entry 3 hours, and waiting time on exit 3 hours.
- **Bajakovo border crossing:** waiting time on entry 2 hours and waiting time on exit 4 hours.
- **Županja border crossing:** waiting time on entry 1.5 hour and no delays on exit.
- **Pasjak border crossing:** no delays on entry and waiting time on exit 2 hours.

On the A2 Zagreb-Macelj from the 27th to the 25th km in the direction of Zagreb, traffic is conducted in one lane. Due to works in the tunnels, the highway will be closed for all traffic between the Krapina and Trakošćan junctions between 8 p.m. and 5 a.m. from April 14 to April 30.

Until April 30, from 8 p.m. to 7 a.m., every day except Sunday, on the A1 Zagreb-Split-Ploče in the zone of the Žuta Lokva junction, on the main route of the highway and the entrance branch of the Žuta Lokva junction, from the direction of Žuta Lokva, all traffic will be stopped periodically for a short time.

On the A3 Bregana – Lipovac, from March 12 to June 10, due to the works on the overpass at the Lučko junction on the Zagreb bypass, traffic will be conducted in accordance with the temporary traffic regulation, which will also be implemented on Jadranska Avenue.

On the A6 Rijeka-Zagreb, due to works in the Tuhobić tunnel, from April 26 to June 2, the left tunnel pipe (Zagreb direction) will be closed, and traffic will be conducted in both directions in the right tunnel pipe.

There are road works on the Istrian Y, as follows: between the Cerovlje and Vranje junctions (A8), driving with temporary traffic regulation and restrictions - between Cerovlje and Lupoglav junctions, there is a ban for vehicles wider than 3 m; between the Lupoglav and Vranje junctions in both directions there is a traffic ban for all emergency transports, and between the Rogovići and Ivoli junctions in the direction of Rijeka there is a ban for vehicles larger than 3 m.

On the Krk bridge (DC102) there is alternating traffic with 30km/h speed limit until June 05. 2021. The Dvor and Vitaljina BC's are open only for passenger traffic and for personal vehicles. Traffic ban for cargo vehicles and buses at Gunja BC (due to the instability of the bridge).

Starting April 1, for entry into Croatia, rapid antigen tests, mutually recognized by EU member states, will also be recognized. Also, entrance will be possible with a vaccination certificate or a certificate of a cured corona virus, which will be valid for 180 days.

On the following link you can find traffic updates on Croatian roads and border crossings:
<https://www.hak.hr/info/stanje-na-cestama/#granicni-prijelazi>



SLOVENIA

SLO-CRO border crossing:

- **Obrežje:** waiting time on entry 2 hours, and no delays on exit.
- **Gruškovje:** waiting time on entry 3 hours, and no delays on exit.

- **Dobovec:** waiting time on entry 1.5 hour, and no delays on exit.
- **Starod:** waiting time on entry 1 hour, and no delays on exit.

On the A1 Ljubljana - Eastern bypass, Ljubljana Bizovik connection - Malence junction in the direction of Malenc, traffic is prohibited for cargo vehicles over 3.5 tons and for buses.

From March 15 to May 17, road works will be conducted in the Golovec tunnel, on the eastern Ljubljana bypass. Due to the renovation of the tunnel, the traffic is conducted through a single tunnel pipe in both directions. Traffic is prohibited in both directions for all vehicles weighing over 3.5 tons.

Until May 2, traffic between the Zadobrovo junction and Bizivik on the Ljubljana Eastern bypass will take place in narrow lanes in both directions and the Ljubljana East entrance will be closed, from Zaloški put towards Zadobrova.

On the Podljubelj - Ljubelj segment of the Tržič - Ljubelj road, the Ljubelj border crossing is closed.

Regional road Ljubljana-Vodiceče will be closed in Šmartno until July 13, 2021. A detour has been partly arranged on the Gorenjska highway between the Šmartno and Vodice junctions.

The new regime for crossing state borders can be found at the link:

<https://www.gov.si/novice/2021-03-05-vzpostavitev-kontrolnih-tock-za-vstop-v-slovenijo/>

On the following link you can find traffic updates on Slovenian roads and border crossings:

<https://www.promet.si/portal/sl/razmere.aspx>

MONTENEGRO

Dobrakovo (MNE) – Gostun (SRB) border crossing:

- 32 trucks waiting on entry, waiting time 1-2 hours. No delays on exit.
- TCG is dispatched regularly, upon arrival at the border crossing, the trucks are dispatched immediately.
- There is no quarantine, Bosnian and foreign drivers are given written instructions to regularly contact epidemiologists.

Ilino brdo – Klobuk border crossing from Bosnia:

- 1 truck waiting on entry, waiting time 10 minutes. No delays on exit.
- During the 08.00-12.00 working hours, waiting time is 30 minutes. Customs procedures are performed as HGVs arrive at border crossing.
- No quarantine.

Debeli Brijeg (MNE) – Karasović (HR) border crossing:

- 9 trucks waiting on entry, waiting time 45 minutes. No delays on exit.
- There is no separate line for vehicles in transit and they are in the waiting line with the rest of the trucks. However, transit vehicles are given written instructions on deadline to exit Montenegro.
- No quarantine.

Božaj (MNE) - Hani i Hotit (AL) Border crossing:

- 8 trucks waiting on entry, waiting time 55 minutes. No delays on exit.
- There is no separate line for vehicles in transit and they are in the waiting line with the rest of the trucks. However, transit vehicles are given written instructions on deadline to exit Montenegro.
- No quarantine.

On the following link you can find additional traffic updates: <https://amscg.org>

While it is obligatory to have a test result to cross the border, passengers will not be able to enter Montenegro from Bosnia and Herzegovina through the border crossing Šćepan Polje - Hum, on the road Plužine - Foča. Entrance is possible from 07.00 to 19.00 at the border crossing Metaljka on the road Pljevlja - Čajniče.

Due to cases of infection in Rožaje, the border crossing Vuča-Godovo on the road Rožaje-Tutin is closed.



- **Senkovka/Novi Yurkovich:** 2 vehicles waiting on entry and exit.
- **Grejac / Pogar:** no delays on entry and exit.
- **Bacevsk / Trobortnoe:** no delays on entry and exit.
- **Terehovo:** waiting time on entry and exit 5 hours, 302 trucks have crossed the border in the last 24 hours.
- **Patemieki:** no delays on entry and exit, 183 trucks have crossed the border in the last 24 hours
- **Silene:** no delays on entry and exit, 144 trucks have crossed the border in the last 24 hours.
- **Grebnevo:** no delays on entry and exit, 76 trucks have crossed the border in the last 24 hours.
- **Domanovo – Makrany:** 2 vehicles waiting on entry and exit.

Quarantine measures do not apply to international transport drivers.

Regarding passenger traffic:

- **Terehovo border crossing:** 6 passenger vehicles have crossed the border in the last 24 hours.
- **Silene border crossing:** 2 passenger vehicles have crossed the border in the last 24 hours.
- **Grebnevo border crossing:** 5 passenger vehicles have crossed the border in the last 24 hours.

If you want this report sent directly to your inbox, please send an email at milsped.tim@milsped.com

Follow Us

Follow us on socialmedia.



Contact Us

Bulevar Zorana Đinđića 121

11070 Novi Beograd, Srbija

+381(0) 11 20 15 100

office@milsped.com